

SMYRNA HIGH SCHOOL

Band Parent's

SURVIVAL

GUIDE

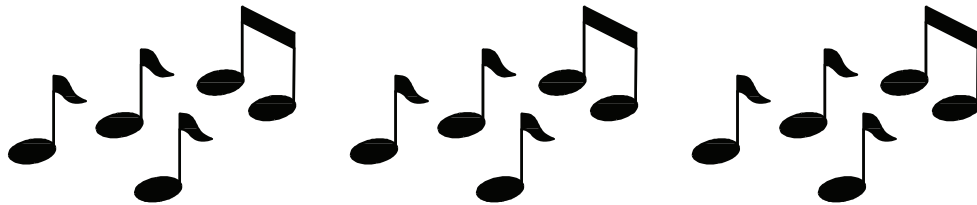


CONTENTS

Introduction	3
Band Booster Executive Board	4
At School Marching Practice	5
At Home Games	6
Away Games & Contest Departure	7
Help Wanted	8
Help Wanted: Pit Crew	9
Help Wanted: Football Games	11
Help Wanted: Competitions & Chaperones	13
Competitions	14
How to Watch a Marching Band Competition	15
Notes	16

The Band Booster Parent's Guide

Our goal with this guide is to better inform you, the parents and guardians of our band students. Too many times seasoned band parents assume everyone knows what we have learned over the years. We want to pass our knowledge on to you. We want and need your fresh input so we can consistently improve our relationship as band parents to the best band in the land!



According to our Bylaws, the Smyrna Band Boosters exists to aid, but not make policy for, the Smyrna Band Program.

The objectives of the Smyrna Band Boosters are to promote interest in the Smyrna High and Middle School Bands, to assist the directors of the band in maintaining their bands, and to cooperate with the Smyrna High and Middle School Administrators. We also strive to encourage and help motivate the band students. As always, we assist in financing the band programs.

2018-19 Band Booster Executive Board

President	Jennifer Martin	jmartin39900@gmail.com
Treasurer	Linda Olivier	smyrnaband2017@yahoo.com
Vice President	Nancy Torres	cymertorres@hotmail.com
Secretary	Elaine Karamustafic	elaine.karamustafic@gmail.com
Guard Mom	Dawn Cooper	dscooper322@gmail.com
Officer-at-Large	Kristy Edwards	kristy_edwards@comcast.net
Uniforms	Susan McHenry Patricia Hedden	

At School Marching Practice

DROP OFF

- Follow schedule provided by Mr. Lutz
- Use extreme caution driving in the parking lot areas. There will be students and equipment present.
- Please park in marked spaces, as not to impede the marching drill area or the entrance and exit to the parking lot. Do not block traffic.

PICK UP

- Parking near practice lot—Do not park on or near the parking lot marching yardlines (white on asphalt).
- Waiting—You are welcome to bring lawn chairs and watch the practice.
- Caution—DO NOT DRIVE OVER INSTRUMENTS OR FLAGS.
Immediately after band practice is dismissed, the band members must gather their instruments and flags and return them to the band room.
- Leaving—Leave slowly and carefully. Sometimes people are running without watching you. Wear your seat belts and come back next time.

At Home Games

BEFORE AND DURING GAME

- The band dresses at the bandroom and marches to the stadium.
- Band Members take position in the assigned seating area on the home team side on the field house side of the bleachers, after performing the Star Spangled Banner.
- The band performs the show during half time.
- After leaving the field, the band is released during the third quarter to support the team on to victory.
- The Band Boosters strongly encourages the parents of band members not to engage in cheers that rival the football cheerleaders.

AFTER GAME

- Before the end of the game, the band exits the stands and walks back to the bandroom.
- If students are wearing uniforms, they change and hang uniforms in bags on racks in numerical order.
- The students gather in the bandroom for a follow up talk with Mr. Lutz. Be patient, these can take an additional 20-30 minutes after the end of the game.

Away Games and Contest Departure

- The band members should arrive at Smyrna High School at the times indicated on the schedule Mr. Lutz gives the students. They must load all their equipment onto the band trailer and take a seat on their designated school bus. All students must ride a bus. Even students with driver's license are not allowed to drive separately.
- The attendance roll is called on the buses before the bus leaves for a game and before they return home.
- There are two adult chaperones on each bus, for each trip.
- The band buses and trucks leave for the away games/contests and they return per the schedule Mr. Lutz provides.

CAR POOLING

- There are several people willing to carry others to the away games and contests. If you need a ride contact one of the officers or post on Facebook.

AWAY GAMES AND CONTEST RETURN

- Follow schedule given to the students by Mr. Lutz.

WAITING

- Usually the buses and equipment trucks arrive back at the school per the schedule. Any parent is welcome to assist in unloading the equipment. Just let the unloading assistant at the back of the truck know your willingness to assist. They will tell you how best to help.
- Leaving—Leave slowly and carefully.



Yes, we need your help! During the summer months and our fall marching season, parents are needed and their help is wanted in a variety of jobs. These are jobs that must be performed in order for this organization to be successful. Sometimes, it appears as though we have all the help we need, when in reality, we desperately need more people to lighten the load. Following is some information on the various jobs that must be accomplished. Look them over, pick out one that interests you, and please join us!

PIT CREW



The Pit Crew assists with getting pit instrument equipment, podiums, drum line stands, and flags onto and off of the field during football games and contests. It is a very important job and must not be taken lightly. The safety of our students and care of our equipment is foremost with this job.

- Pit Crew members are encouraged to sign up during the parent performance on the final day of band camp. This gives the chairman ample time to determine his personnel needs prior to the beginning of the season.
- Members are encouraged to dedicate themselves to the full season from August to the end of October. When you sign up for pit, please be aware you are making a seasonal commitment.
- Help is **DESPERATELY** needed at the band room following away football games and contests for loading and unloading of the equipment trailer.
- 2-3 volunteers are needed to sign up to pick up the Ryder truck on Friday afternoon around 3 p.m. and drive it to the school for loading. The same person who signs for it needs to drive to and from the games and competitions on Saturday. By having 2 or 3, 1 person is not committed to the entire season for every event.

- It is very important to be able to recognize the instruments our children play in order to be able to load the trailer for away games and competitions. Learn the difference between a sousaphone, marimba, chimes, tympani, uniform racks, and instruments cabinets, etc.
- If you are a regular pit crew worker, you and only you are allowed free admittance to football games and competitions. Your spouse (unless they are a pit crew worker) or children will not be admitted to the games or competitions. DO NOT ATTEMPT TO HAVE YOUR CHILDREN OR SPOUSE WALK IN WITH THE PIT CREW AND BAND MEMBERS. THIS IS DANGEROUS. IF YOU HAVE QUESTIONS CONCERNING THIS POLICY, PLEASE SEE AN OFFICER. Also, just because you are a pit crew member doesn't guarantee free admittance to all games and competitions. Individual stadium rules apply when we are on the road.
- Pit Crew should wear band shirts. You may purchase those during the uniform fitting for your student during band camp.
- Please remember we are guests of the stadiums where we perform. We are ambassadors of the Smyrna High School Band, Smyrna High School, and the city of Smyrna and Rutherford County.

Home Football Games

The Smyrna High Band Boosters have a long-standing reputation for supporting the band program at football games both home and away. The excitement of high school football is unmatched in the mid-state and the band programs are no exception. There is a certain magic that happens when parents, students, football players, band members, and the community gather together at a stadium on any given fall Friday night.

- HOME game operations for the band are different than away games. Students will stay after school, practice together, eat dinner (on their own- please send money or an extra bagged lunch with your student to eat), change into their uniforms at 6:00 p.m. before marching in the parade block by 6:50 p.m.
- Following practice, pit trailers are loaded and equipment locked in place, flags, and podiums are folded and loaded onto a trailer, and the pit crew waits for the walk to the stadium with the pit percussionists.
- The Pit Crew leaves before the band and walks at a comfortable speed with the four-wheeler pulling the typanies. Those Pit Crew members who intend to work the field during the performance are the only ones allowed to enter the gate with Pit. All others, including spouses and children must pay admission to the game.
- Pit Crew members are discouraged from interfering with band members, cheerleaders, officials, or the game in any fashion. You are there to help, not hinder.

- Students are released for a break during the 3rd quarter. The band boosters provide a bottle of water per student when they come off the field after performing the half time show. Please send money with your child for any snacks or other drinks from the concession stand.
- Pit percussion will leave the field first, followed by the band in parade block. Your help is needed to return instruments and flags to the band room.
- Please be advised that the band WILL meet immediately following each home game. When all uniforms and instruments have been properly secured in the band room, the directors will speak to the band, pit, and guard as a whole and dismiss. Please be patient, this can take up to 30-45 minutes after the end of the game.

Away Football Games

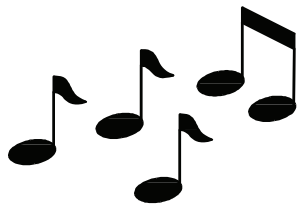
- In many ways, the AWAY football games are different for the band.
- We begin loading the trailer as soon as the Ryder truck is delivered by a volunteer. Usually around 4 p.m. We need volunteers to arrive to assist in the loading of the trailer.
- WE REALLY NEED HELP AFTER THE GAME UNLOADING THE TRAILER AT THE BAND ROOM! Those who have already worked loading and unloading during the game would like a little help upon their return.

Competitions

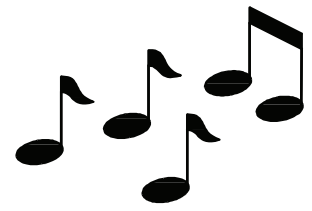
- Trailer loading and unloading for the competitions is exactly like away football games. The Ryder truck will stay at the school overnight and be returned after the competition (or on Sunday).
- We will post on Facebook when we are on our way back with approximate arrival times. Please help unload when we return to the school.
- Feeding our students before and during competitions is a high priority. We need to make sure they have energy to do their best. The Band Boosters will request needs for food prior to the event date and ask for parent donations.
- The Band Boosters will pack water for students when they come off the field after performing. Water donations will be requested throughout the season. Watch for sales at your local stores!

The Buses Don't Roll without Chaperones!

- 8 chaperones (4 per bus) are required every time we travel.
- Parents can sign up to chaperone.
- Sorry, but younger siblings are not allowed to ride the bus with you.
- Chaperones keep order on the buses to and from events, help with uniforms, stay with the band during events, distribute water, etc.



Competitions



This is one of the most important areas we will cover in this survival guide. Competitions for the Smyrna High School Band are very important and will be some of the most memorable moments your children and you will ever have. You will laugh, cry, feel elated, and dejected, want to kick a wall or hug someone or something close to you.

- A family of three or four with a student in the band can expect to spend quite a bit of money for contest tickets, food and/or souvenirs for the all-day competition. We advise carrying cash as most do not accept checks or credit cards.
- Typically, on competition days, the band rehearses early in the morning (8 a.m. or earlier) before we load the trailer and travel to the competition. Travel times vary.
- Parents not chaperoning may caravan with the buses, but please do not get between the pit equipment trailer or Mr. Lutz's truck and the buses. You will need to park in general parking as non-equipment vehicles will not be allowed to park with the buses.
- Mr. Lutz and Mr. Reagh are at their most intense on competition days. If there are any problems that can be solved with a Band Booster officer, please ask. We are a team, a FAMILY, so please be understanding if nerves are on edge!
- If you cannot make the competition, please send money with your student to purchase food and/or drinks during the day. Band Boosters will provide a bottle of water after the band comes off the field after performing.
- Trailer loading and unloading for competitions is exactly like away football games. Help is always needed and welcomed!

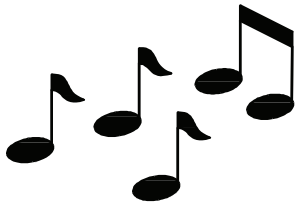
How to Watch a Marching Band Competition

If you are attending a marching competition for the first time, we wish to point out some interesting facts on just what a band competition is all about.

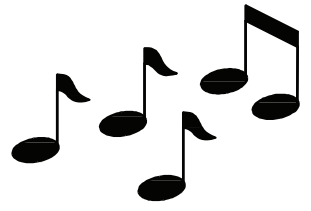
It is difficult for the average spectator to comprehend everything that is happening on the field with the flags twirling, rifles spinning, instruments playing and the band marching. Everything is done to bring out the most in the music.

1. Try to keep an overall view of the performance and not concentrate on any one portion. The entire show is geared to expressing the music as presented by the band, both playing and marching.
2. The most important individual/individuals on the field while the band is performing is the field commander. Each field commander has a distinctive style; he or she has to know when to control the band and when to control the crowd. At times the field commander can be a showman, but at all times he or she must be in absolute control of the band.
3. The most vital portion of the show is provided by the flags—they must set the stage for the musical presentation.
4. It takes an alert fan to catch all the maneuvers of the rifle section. They are an extremely busy group and they add greatly to the overall pagentry of a well-designed show.
5. Soloists are usually spotlighted by either flags or rifles to make it obvious just who is playing the solo. These are usually the most talented players and they are featured singly or in small groups.

Finally, if you enjoy highlights or performances by various bands, show your appreciation by your applause and cheers. It is the only reward the members get while performing. Your applause can inspire a band and turn a mediocre show into a fantastic performance.



Notes



A series of 18 horizontal dotted lines spanning the width of the page, providing a guide for handwriting practice.